

Environmental Review Record

City of Ontario Sewer Improvement Project

Subject: Area of Potential Effects Notification for the Sewer Line Replacement Project, Ontario, Malheur County, Oregon

Ontario Oregon, Malheur County

Categorical Exclusion — NEPA Environmental Documentation

The following agencies/agents have been contacted regarding this project.

<u>Agency/Contact/ Data Source</u>	<u>Address</u>	<u>Name</u>	<u>Contact Date</u>	<u>Response</u>
Wetlands				
U.S. Fish and Wildlife Services- National Wetlands Inventory	https://www.fws.gov/wetlands/data/Mapper.html	NA	February 11, 2020	NA
Oregon Wetland Inventory		NA	April XX, 2020	NA

Wetlands (CEST and EA)

General requirements	Legislation	Regulation
Executive Order 11990 discourages that direct or indirect support of new construction impacting wetlands wherever there is a practicable alternative. The U.S. Fish and Wildlife Service's National Wetlands Inventory can be used as a primary screening tool, but observed or known wetlands not indicated on NWI maps must also be processed. Off-site impacts that result in draining, impounding, or destroying wetlands must also be processed.	Executive Order 11990	24 CFR 55.20 can be used for general guidance regarding the 8 Step Process.
References		
https://www.hudexchange.info/environmental-review/wetlands-protection		

1. Does this project involve new construction as defined in Executive Order 11990, expansion of a building's footprint, or ground disturbance?

The term "new construction" shall include draining, dredging, channelizing, filling, diking, impounding, and related activities and any structures or facilities begun or authorized after the effective date of the Order.

No → *Based on the response, the review is in compliance with this section. Continue to the Worksheet Summary below.*

Yes → *Continue to Question 2.*

2. Will the new construction or other ground disturbance impact an on- or off-site wetland?

The term "wetlands" means those areas that are inundated by surface or ground water with a frequency sufficient to support, and under normal circumstances does or would support, a prevalence of vegetative or aquatic life that requires saturated or seasonally saturated soil conditions for growth and reproduction. Wetlands generally include swamps, marshes, bogs, and similar areas such as sloughs, potholes, wet meadows, river overflows, mud flats, and natural ponds. Wetlands under E.O. 11990 include isolated and non-jurisdictional wetlands.

No, a wetland will not be impacted in terms of E.O. 11990's definition of new construction.

→ *Based on the response, the review is in compliance with this section. Continue to the Worksheet Summary below. Provide a map or any other relevant documentation to explain your determination.*

Yes, there is a wetland that be impacted in terms of E.O. 11990's definition of new construction.

→ You must determine that there are no practicable alternatives to wetlands development by completing the 8-Step Process.

Provide a completed 8-Step Process as well as all documents used to make your determination, including a map. Be sure to include the early public notice and the final notice with your documentation.

Continue to Question 3.

- 3. For the project to be brought into compliance with this section, all adverse impacts must be mitigated. Explain in detail the exact measures that must be implemented to mitigate for the impact or effect, including the timeline for implementation.**

Which of the following mitigation actions have been or will be taken? Select all that apply:

- Permeable surfaces
- Natural landscape enhancements that maintain or restore natural hydrology through infiltration
- Native plant species
- Bioswales
- Evapotranspiration
- Stormwater capture and reuse
- Green or vegetative roofs with drainage provisions
- Natural Resources Conservation Service conservation easements
- Compensatory mitigation

Worksheet Summary

Compliance Determination

Provide a clear description of your determination and a synopsis of the information that it was based on, such as:

- Map panel numbers and dates
- Names of all consulted parties and relevant consultation dates
- Names of plans or reports and relevant page numbers
- Any additional requirements specific to your region

NWI does not identify any wetland or aquatic resource within the project area. Project will not impact any on- or off-site wetland or aquatic resource.

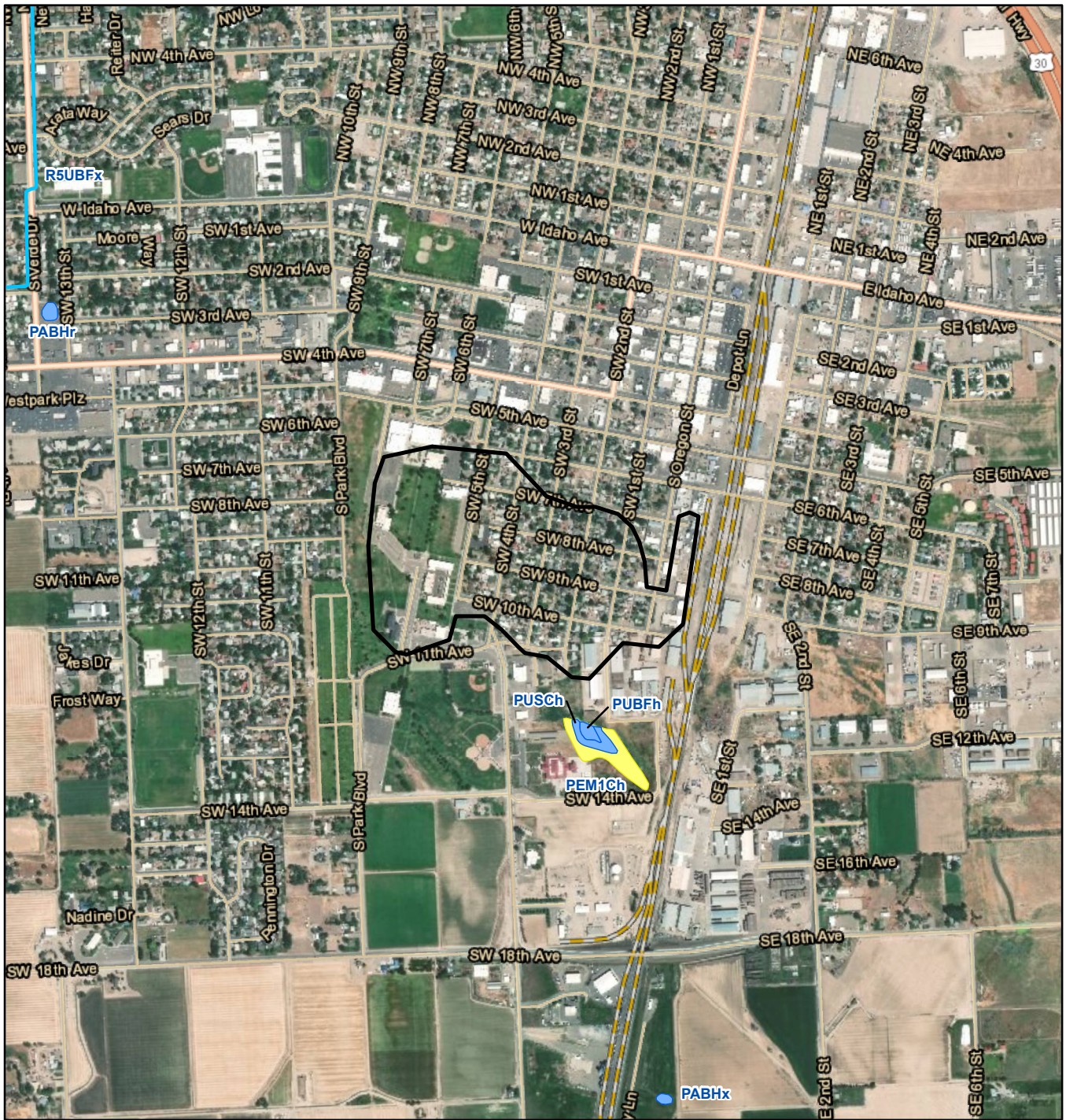
NWI downloaded March 2020.







Are formal compliance steps or mitigation required?

Yes

No



Legend

-  City of Ontario Project Location
- National Wetlands Inventory***
-  Freshwater Emergent Wetland
-  Freshwater Pond
-  Riverine

Note: No aquatic resources identified by state or local wetland inventory in the project area.

***Wetland Codes:**

- PABHr** = Palustrine; Aquatic Bed; Permanently Flooded; Artificial Substrate
- PABHx** = Palustrine; Aquatic Bed; Permanently Flooded; Excavated
- PEM1Ch** = Palustrine; Emergent; Persistent; Seasonally Flooded; Diked/Impounded
- PUBFh** = Palustrine; Unconsolidated Bottom; Semipermanently Flooded; Diked/Impounded
- PUSCh** = Palustrine; Unconsolidated Shore; Seasonally Flooded; Diked/Impounded
- R5UBFx** = Riverine; Unknown Perennial; Unconsolidated Bottom; Semipermanently Flooded; Excavated

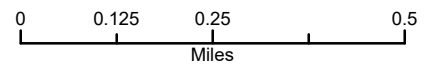
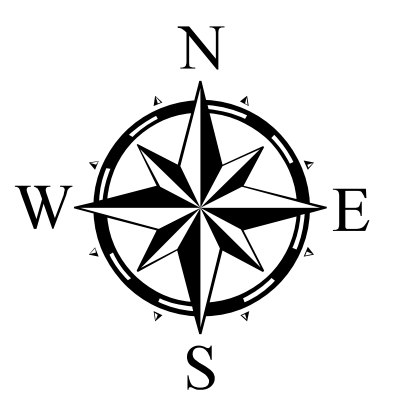


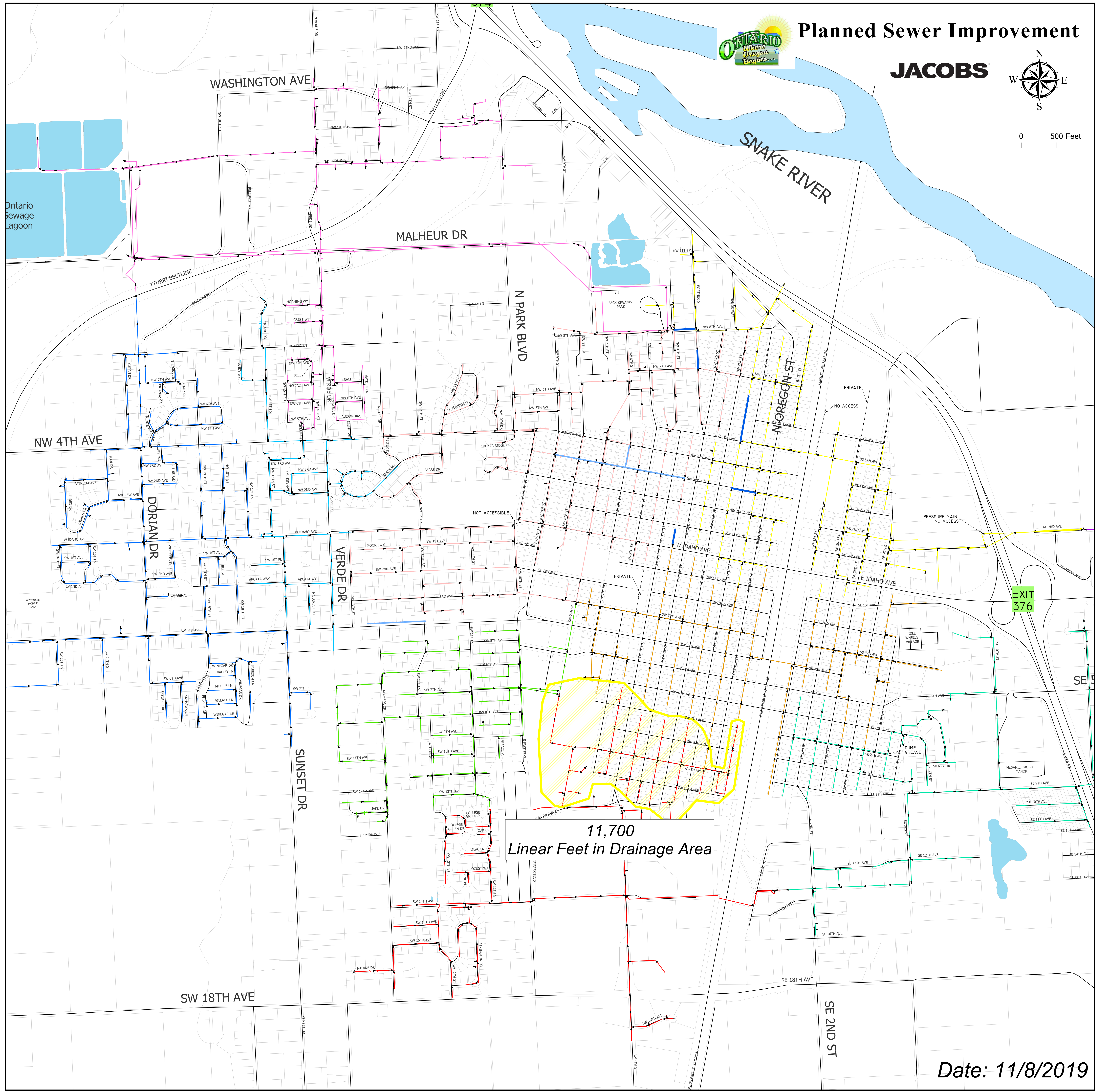
Figure 1. Wetlands
City of Ontario Sanitary Sewer Improvement Project
Categorical Exclusion Documentation
City of Ontario, Malheur County, Oregon



Planned Sewer Improvement



0 500 Feet



11,700
Linear Feet in Drainage Area

Date: 11/8/2019