

**Environmental Review Record**

**City of Ontario Sewer Improvement Project**

*Subject: Sewer Line Replacement Project, Ontario, Malheur County, Oregon*

**Ontario Oregon, Malheur County**

**Categorical Exclusion — NEPA Environmental Documentation**

The following agencies/agents have been contacted regarding this project.

<u>Agency/Contact/ Data Source</u>	<u>Address</u>	<u>Name</u>	<u>Contact Date</u>	<u>Response</u>
<b>Airport</b>				
Google Earth Pro	<a href="http://www.googleEarthPro.com">www.googleEarthPro.com</a>	NA	April 10, 2020	NA

## Airport Hazards (CEST and EA)

General policy	Legislation	Regulation
It is HUD's policy to apply standards to prevent incompatible development around civil airports and military airfields.		24 CFR Part 51 Subpart D
References		
<a href="https://www.hudexchange.info/environmental-review/airport-hazards">https://www.hudexchange.info/environmental-review/airport-hazards</a>		

**1. To ensure compatible land use development, you must determine your site's proximity to civil and military airports. Is your project within 15,000 feet of a military airport or 2,500 feet of a civilian airport?**

No → *Based on the response, the review is in compliance with this section. Continue to the Worksheet Summary below. Provide a map showing that the site is not within the applicable distances to a military or civilian airport.*

Yes → *Continue to Question 2.*

**2. Is your project located within a Runway Potential Zone/Clear Zone (RPZ/CZ) or Accident Potential Zone (APZ)?**

Yes, project is in an APZ → *Continue to Question 3.*

Yes, project is an RPZ/CZ → *Project cannot proceed at this location.*

No, project is not within an APZ or RPZ/CZ

→ *Based on the response, the review is in compliance with this section. Continue to the Worksheet Summary below. Provide a map showing that the site is not within either zone.*

**3. Is the project in conformance with DOD guidelines for APZ?**

Yes, project is consistent with DOD guidelines without further action.

**Explain how you determined that the project is consistent:**

→ *Based on the response, the review is in compliance with this section. Continue to the Worksheet Summary below. Provide any documentation supporting this determination.*

No, the project cannot be brought into conformance with DOD guidelines and has not been approved. → *Project cannot proceed at this location.*

Project is not consistent with DOD guidelines, but it has been approved by Certifying Officer or HUD Approving Official.

**Explain approval process:**

**If mitigation measures have been or will be taken, explain in detail the proposed measures that must be implemented to mitigate for the impact or effect, including the timeline for implementation.**

→ *Based on the response, the review is in compliance with this section. Continue to the Worksheet Summary below. Provide any documentation supporting this determination.*

**Worksheet Summary**

**Compliance Determination**

Provide a clear description of your determination and a synopsis of the information that it was based on, such as:

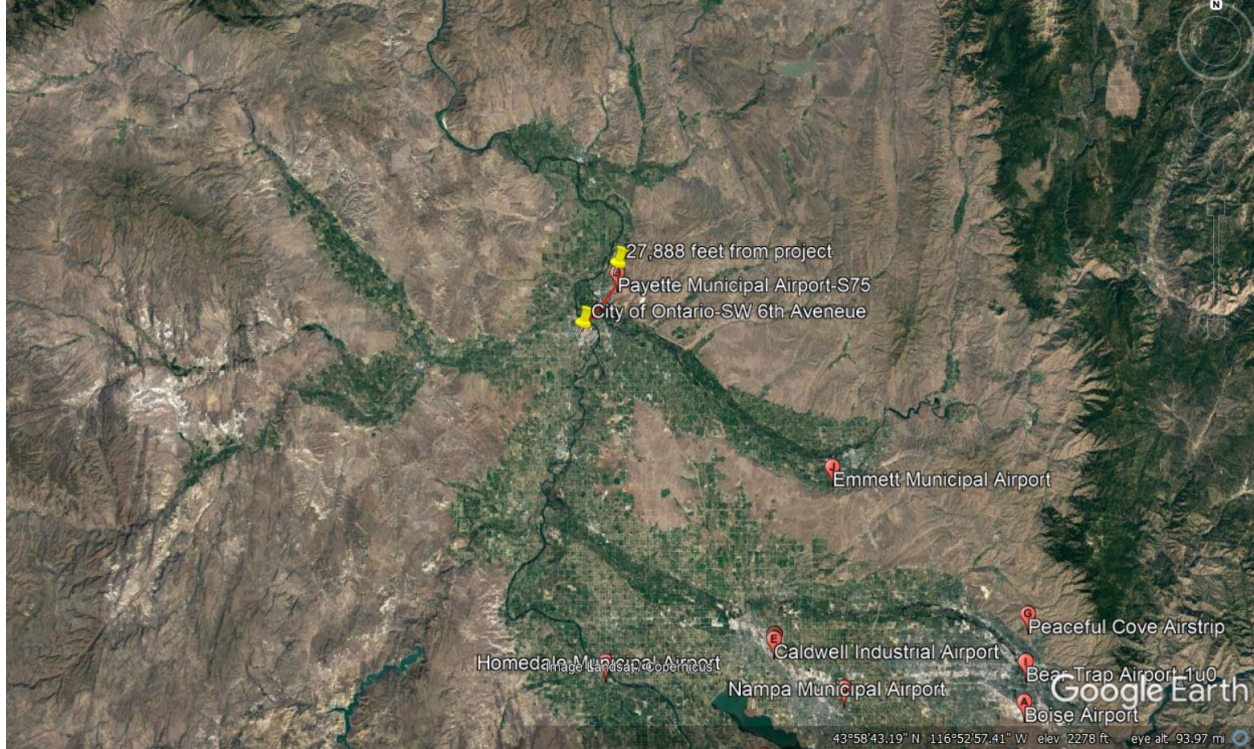
- Map panel numbers and dates
- Names of all consulted parties and relevant consultation dates
- Names of plans or reports and relevant page numbers
- Any additional requirements specific to your region

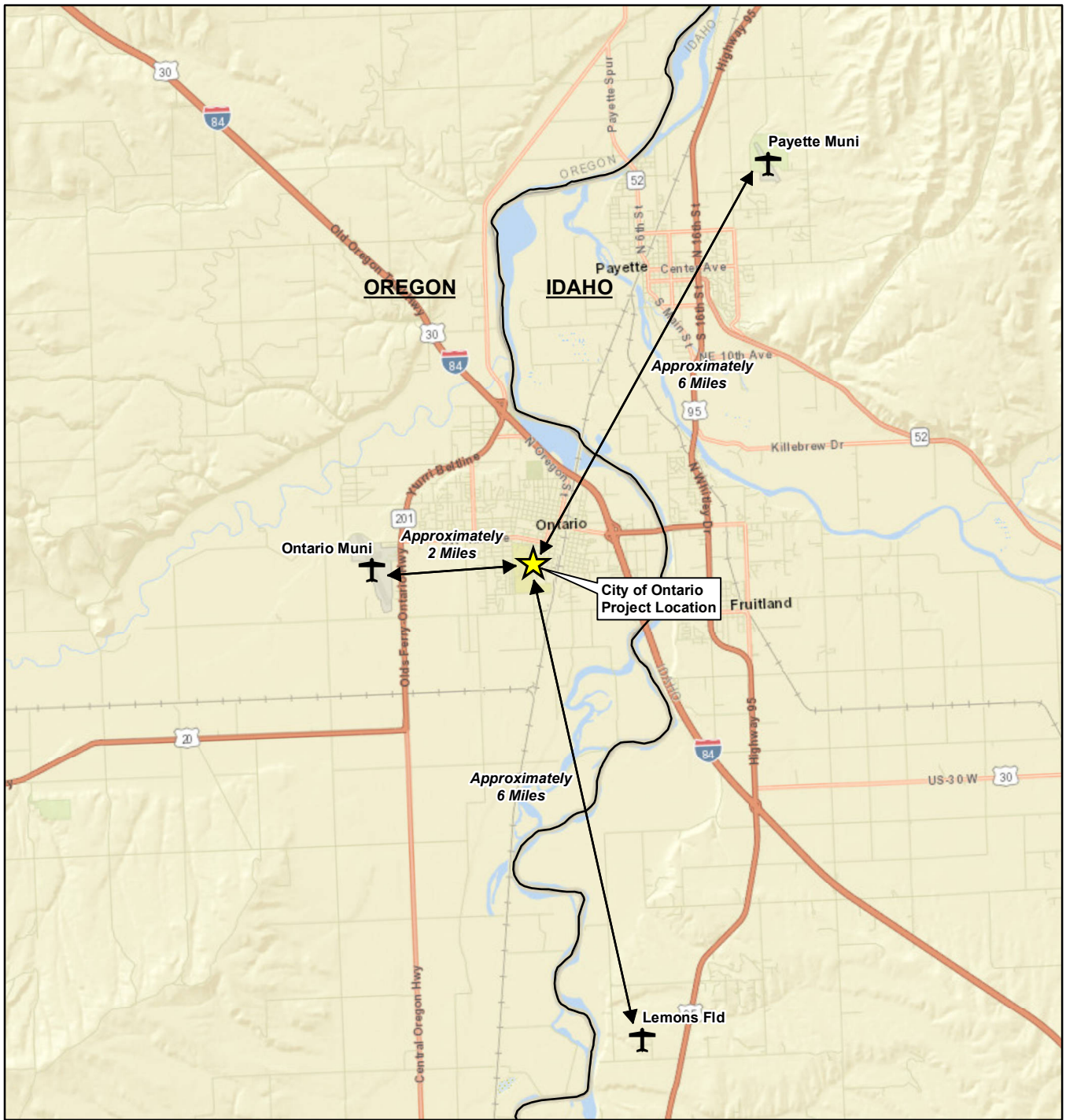
**The project is not within 15,000 feet of a military airport or 2,500 feet of a civilian airport?**  
See Google Earth Imagery; airports are in excess of 25,000 feet from the Ontario Sewer Improvement Project.

**Are formal compliance steps or mitigation required?**



Yes

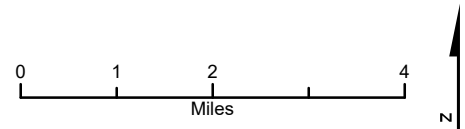
No





**Legend**

-  City of Ontario Project Location
-  Airports and Airfields



**Figure 1. Airport Clear Zones and Accident Potential Zones**  
 City of Ontario Sanitary Sewer Improvement Project  
 Categorical Exclusion Documentation  
 City of Ontario, Malheur County, Oregon